

NOTES:
 TRAFFIC CONTROL DESCRIPTION:
 PROJECT DATE: TBD TIME: TBD

- DESIGN SPEED: 60 KM/H
- SIGN LOCATION AND SPACING, TAPER LENGTH, AND MARKER SPACING WILL BE IN ACCORDANCE WITH THE TMM (2020), PUBLISHED BY THE MOTI. CHANGES TO THE LAYOUT OF SIGNAGE MAY BE MADE BY THE TCS TO ACCOMMODATE TRAFFIC AND CONDITIONS ON SITE AT THE TIME, AND TO BE DOCUMENTED ON THE TMP;
 - DUE TO ROAD IMPROVEMENTS. ROAD DISPLAYED ON DRAWING MY NOT BE EXACT, VISUAL SIGHT MUST BE MADE ON SITE;
 - DRIVEWAYS AND LANEWAYS OUTSIDE OF IMPACTED AREA MAYBE NOT SHOWN ON DRAWING;
 - SIGNS AND STANDS SHALL NOT BLOCK DRIVEWAYS, BUS STOPS, OR BIKE LANES;
 - SIGN DISTANCES AND TAPERS MAY HAVE BEEN MODIFIED FOR BLOCK SIZE AND DRIVEWAY ACCESS AND FOR DRIVER ATTENTION;
 - SIDEWALK TO REMAIN OPEN;
 - TRAFFIC CONTROL TO PROVIDE ITC LOCKUPS SHORT DURATION
 - NOT A BUS ROUTE;
 - CYCLIST WILL NOT BE AFFECTED

Legend

- Camera Crew
- F.A.B.
- Lane Closure / Buffer Truck
- Picture Care Route
- Sign Stand
- TCP
- Tubular Marker
- Work Area

Manifest

- 48 x Tubular Marker
- 12 x Sign Stand
- 4 x C-001-1
- 4 x C-004
- 4 x C-029
- 4 x TCP
- 2 x Lane Closure / Buffer Truck

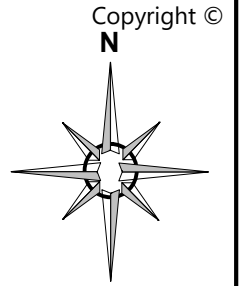
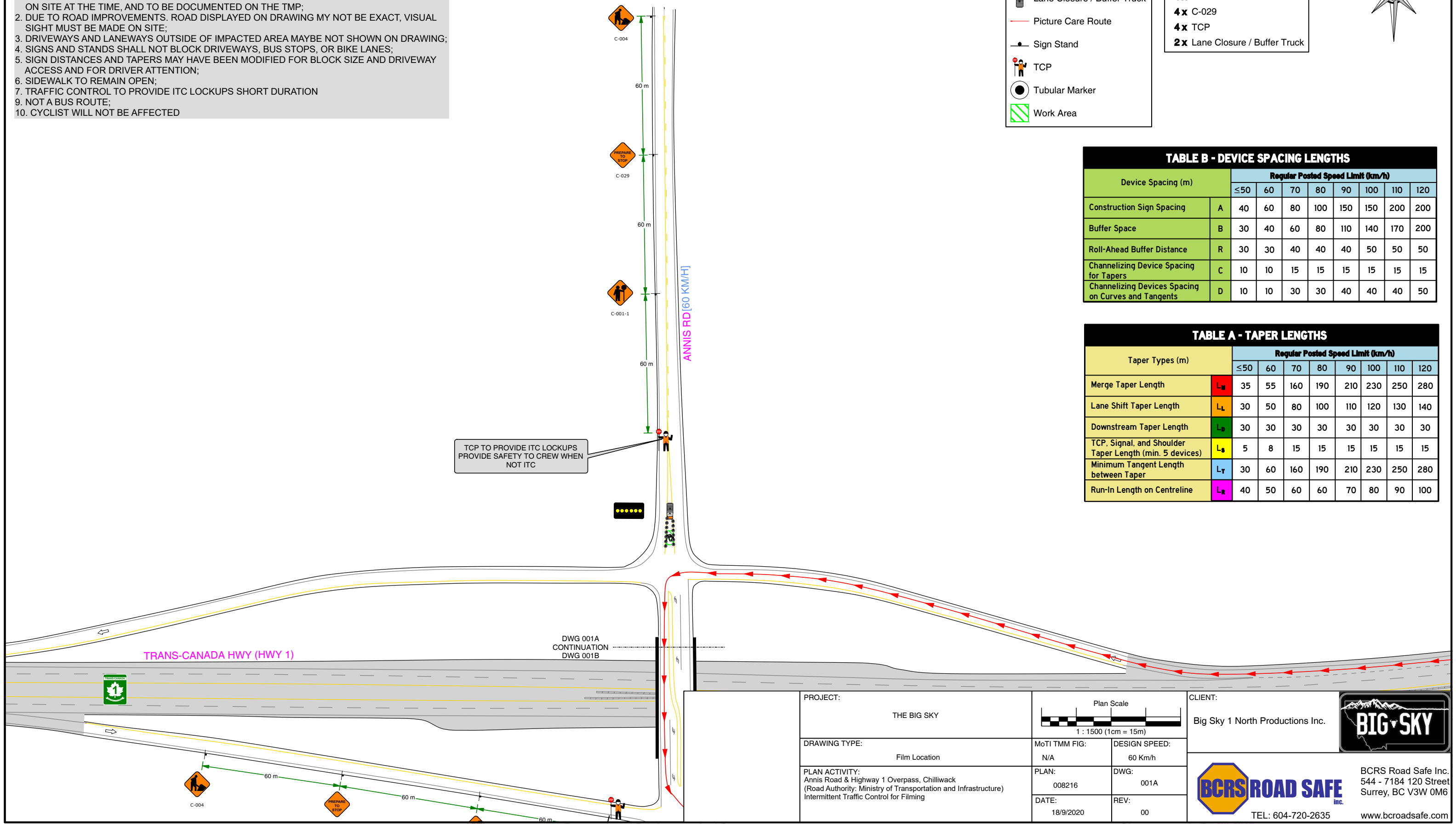


TABLE B - DEVICE SPACING LENGTHS

Device Spacing (m)		Regular Posted Speed Limit (km/h)							
		≤50	60	70	80	90	100	110	120
Construction Sign Spacing	A	40	60	80	100	150	150	200	200
Buffer Space	B	30	40	60	80	110	140	170	200
Roll-Ahead Buffer Distance	R	30	30	40	40	40	50	50	50
Channelizing Device Spacing for Tapers	C	10	10	15	15	15	15	15	15
Channelizing Devices Spacing on Curves and Tangents	D	10	10	30	30	40	40	40	50

TABLE A - TAPER LENGTHS

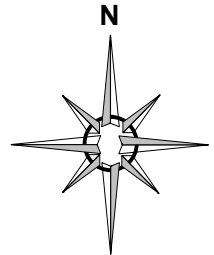
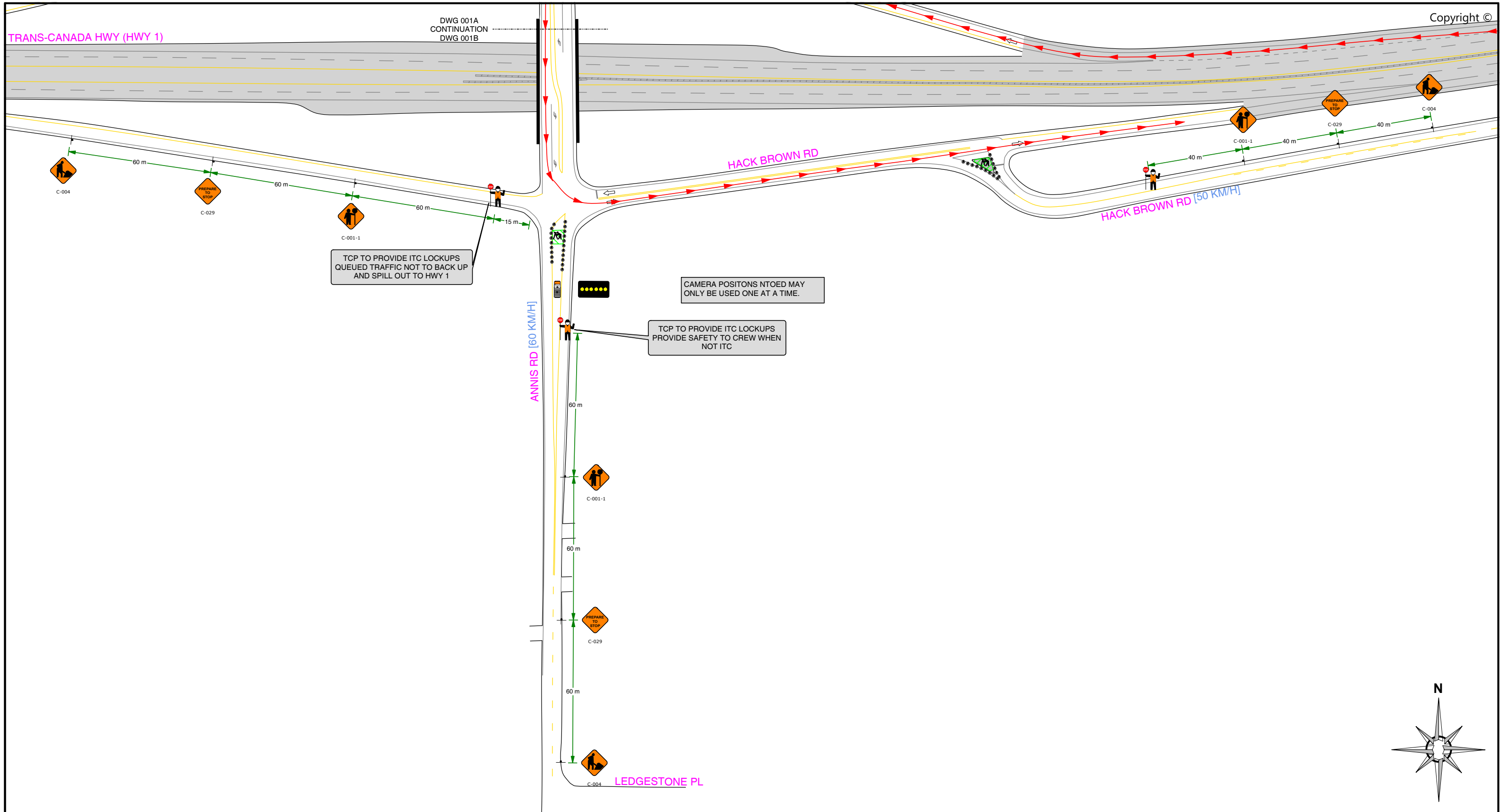
Taper Types (m)		Regular Posted Speed Limit (km/h)							
		≤50	60	70	80	90	100	110	120
Merge Taper Length	L _M	35	55	160	190	210	230	250	280
Lane Shift Taper Length	L _L	30	50	80	100	110	120	130	140
Downstream Taper Length	L _D	30	30	30	30	30	30	30	30
TCP, Signal, and Shoulder Taper Length (min. 5 devices)	L _S	5	8	15	15	15	15	15	15
Minimum Tangent Length between Taper	L _T	30	60	160	190	210	230	250	280
Run-In Length on Centreline	L _R	40	50	60	60	70	80	90	100



TCP TO PROVIDE ITC LOCKUPS
 PROVIDE SAFETY TO CREW WHEN
 NOT ITC

These TMP drawings are prepared solely for the use by the party with whom the Design Professional has entered into a contract, and there are no representations of any kind made by the Design Professional to any party with whom the Design Professional has not entered into contract.

PROJECT: THE BIG SKY	Plan Scale 1 : 1500 (1cm = 15m)	CLIENT: Big Sky 1 North Productions Inc.	
DRAWING TYPE: Film Location	MoTI TMM FIG: N/A	DESIGN SPEED: 60 Km/h	 BCRS Road Safe Inc. 544 - 7184 120 Street Surrey, BC V3W 0M6 TEL: 604-720-2635 www.bcroadsafe.com
PLAN ACTIVITY: Annis Road & Highway 1 Overpass, Chilliwack (Road Authority: Ministry of Transportation and Infrastructure) Intermittent Traffic Control for Filming	PLAN: 008216	DWG: 001A	
	DATE: 18/9/2020	REV: 00	



These TMP drawings are prepared solely for the use by the party with whom the Design Professional has entered into a contract, and there are no representations of any kind made by the Design Professional to any party with whom the Design Professional has not entered into contract.

SIGN LOCATION AND SPACING, TAPER LENGTH, AND MARKER SPACING WILL BE IN ACCORDANCE WITH THE TMM (2020), PUBLISHED BY THE MOTI.
CHANGES TO THE LAYOUT OF SIGNAGE MAY BE MADE BY THE TCS TO ACCOMMODATE TRAFFIC AND CONDITIONS ON SITE AT THE TIME, AND TO BE DOCUMENTED ON THE TMP.

PROJECT:	THE BIG SKY	 Plan Scale 1 : 1500 (1cm = 15m)		CLIENT:	Big Sky 1 North Productions Inc.	
	DRAWING TYPE:	Film Location	MoTI TMM FIG: N/A		DESIGN SPEED: 60 Km/h	
PLAN ACTIVITY:	Annis Road & Highway 1 Overpass, Chilliwack (Road Authority: Ministry of Transportation and Infrastructure) Intermittent Traffic Control (ITC) for Filming	PLAN:	008216	DWG:	001B	BCRS Road Safe Inc. 544 - 7184 120 Street Surrey, BC V3W 0M6 TEL: 604-720-2635 www.bcroadsafe.com
		DATE:	18/9/2020	REV:	00	